

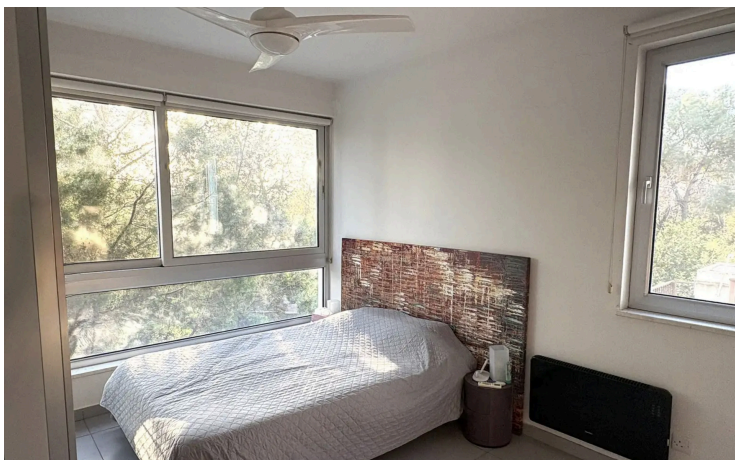
#67544

Two Bedroom Apartment Surrounded in Lush Greenery

📍 Aglantzia - Plati, Nicosia

€950 /month





ΠΡΟΣΟΧΗ/ATTENTION

Πληροφορίες όπως τιμές ακινήτων και/ή διαθεσιμότητα ακινήτων που επισυνάπτονται στην ιστοσελίδα μας δεν είναι δεσμευτικές και δίνεται να

Overview

Specifications

Bedrooms

 2


Bathrooms

 1

Covered

 90 m²

Type	Apartment
Toilets	1
Covered veranda	10 m²
Status	Used

Year of construction	2015
Furnished	Partially furnished
Energy efficiency rating	 Certificate expected

Description

Two Bedroom Apartment Surrounded in Lush Greenery for Rent in Plati Aglantzia!

This beautiful 2-bedroom apartment is nestled beside a Athalassas forest, offering a peaceful and natural setting in a quiet, residential neighborhood. Located in one of the most sought-after areas of Nicosia, it combines tranquility with easy access to everyday amenities and the Limassol/Larnaca highway.

The apartment is set in a small, well-maintained building of only four apartments, ensuring privacy and a calm living environment. Inside, you'll find a bright, modern open-plan layout with a stylish kitchen island, fitted wardrobes, and all essential kitchen appliances included. The space opens onto a private balcony with stunning forest views, perfect for relaxing.

It comes partly furnished and includes air conditioning throughout, with optional central electric heating for added comfort. Additional features such as double glazing, roller blinds, a solar water heater, covered parking, storage room, make this home both practical and comfortable.

Easy access to main roads, amenities and highway.

A perfect home for those who appreciate nature, privacy, and convenience.

NO ELEVATOR

Don't miss out.



ΠΡΟΣΟΧΗ/ATTENTION

Πληροφορίες όπως τιμές ακινήτων και/ή διαθεσιμότητα ακινήτων που επισυνάπτονται στην ιστοσελίδα μας δεν είναι δεσμευτικές και δίνεται να

Additional information

Facilities

Aircondition, Split system

Heating, Central, electric

Parking, Covered

Solar water heater

Storage

Features

Bath

Bright

Combined kitchen and dining area

Double glazing

Easy access to highway

Easy access to main roads

Fitted wardrobes

Kitchen appliances

Kitchen island

Modern design

Near amenities

Next to green area

Open plan

Roller blinds

Veranda



ΠΡΟΣΟΧΗ/ATTENTION

Πληροφορίες όπως τιμές ακινήτων και/ή διαθεσιμότητα ακινήτων που επισυνάπτονται στην ιστοσελίδα μας δεν είναι δεσμευτικές και δίνεται να